

Dear Fall 2023 Launch Families—

We thank you for your patience as we continue to adapt to the changing landscape of COVID-19 and changing requirements from the Department of Children, Youth, and Families, the King County Department of Health, and Seattle Public Schools.

Per guidelines in place for licensed child care, we are required to abide by best health practices set forth by health professionals.

On April 3rd, the Secretary of Health’s mask mandate was rescinded. Because Launch is required to follow best health practices laid out by the Department of Health and King County Public Health guidelines, there are some changes and updates to our Health Policy. Please read through the guidance below carefully, as many components have changed.

COVID-19 Prevention Best Practices

MASKS

Students and site-based staff are no longer required to wear masks, however if there is a case of Covid-19 or an outbreak, families will be notified immediately, and everyone will be required to wear masks for 10 days after last case(s) of Covid-19 to prevent the spread of Covid.

NOTE: ALL Visitors, including non-site-based Launch staff, vendors, community members and family members who are entering the program space for 15 minutes or longer are encouraged to wear a mask.

Masks for staff and students may be required depending on transmission rates in a specific classroom and/or location to help mitigate spread. Families and vendors will be notified if a site begins requiring masks to mitigate the spread of Covid-19

Masks will be required for participants upon return for up to 10 days after isolation or exposure to COVID-19, or due to health concerns in a specific classroom.

HANDWASHING

We will continue frequent handwashing — with teacher support — throughout the day.

CLEANING & DISINFECTING

Classroom spaces and high touch surfaces will be frequently disinfected throughout the day.

VENTILATION

Additional ventilation will be provided in programming when possible.

MEALS

Meals and snacks will NOT be offered in family style.

Illness Policy

Launch staff based at sites will monitor their own health for symptoms of COVID-19 (or other illnesses) and will stay home if they are exhibiting COVID-19 symptoms. Launch students will be monitored for symptoms of COVID or other illnesses throughout the day. Students who begin to exhibit any symptoms of illness will be sent home immediately and may not return until they have a negative covid test. **All Visitors, vendors and non-site based Launch staff will be asked to sign-in when entering a Launch space.** This allows us to track potential exposures or transmission in the event we have a positive case of COVID-19. **(Appendix A)**

Launch reminds all families that their children should not attend school while exhibiting any symptoms of any illness and only return when symptoms are no longer present.

Any student, child, or staff who reports or has COVID-19-like symptoms is required to be immediately isolated

Launch reserves the right to close a classroom or program to mitigate the spread of Covid-19

from others, sent home or where they are currently residing, and referred to diagnostic testing as soon as possible, regardless of vaccination status. While waiting to leave the school or childcare, the individual with symptoms is required to be isolated and wear a well-fitting face mask

Tuition Policy

Per Launch Policy, there are no credits or refunds for any short-term closures relating to COVID-19 or any days missed while a student is in quarantine. In the event of a classroom, school, or district-wide closure, Launch leadership will meet to evaluate appropriate next steps. The decision to reopen classrooms, open a Full Day program, or to continue an After School program during such a closure would be based on community safety, space availability, and staffing ability.

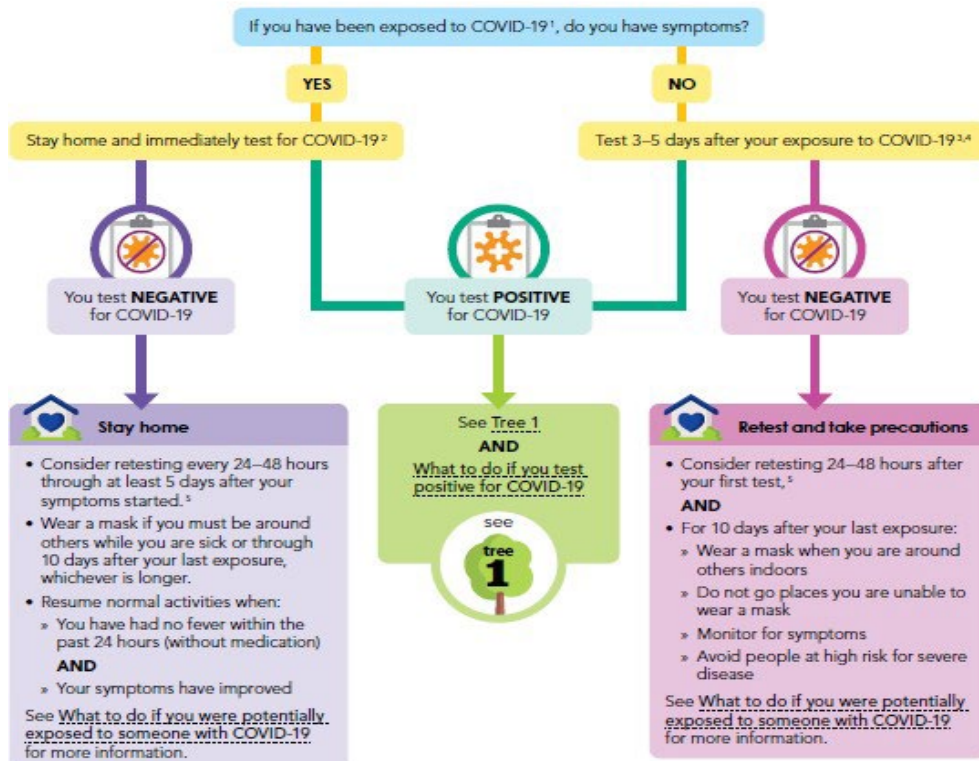
Notification

Launch will continue to notify families if there has been a positive case of COVID-19 when their child is considered a close contact.

What to do if you have been exposed to COVID-19



This decision tree is for the general public and non-health care settings, such as schools and child cares.



¹ Exposed to COVID-19: someone who was within 6 feet of a COVID-19 case for more than 15 minutes within a 24-hour period during the case's contagious period. The definition of a close contact may vary in some situations.
² If you tested positive in the past 90 days and have symptoms of COVID-19, use an antigen test (not a PCR test).
³ If you have tested positive in the past 30 days and recovered and do not have symptoms, testing again for COVID-19 is not recommended. You should, however, wear a well-fitting and high-quality mask around others, not go places you cannot wear a mask, monitor for symptoms, and avoid people at high risk for severe disease for 10 days after your last exposure.
⁴ If you tested positive in the past 30-90 days, use an antigen test (not a PCR test).
⁵ See [Self-Testing Guidance for the Public](#) for additional information about using repeat testing if you test negative. If you tested negative with a molecular laboratory test (e.g., PCR), you do not need to repeat testing.



DOH 420-456 February 6, 2023

To request this document in another format, call 1-800-525-0177. Deaf or hard of hearing customers, please call 711 (Washington Relay) or email civilrights@doh.wa.gov.

Health & Safety Guidance

1. What should Launch staff or students do if they begin to demonstrate symptoms of COVID-19?

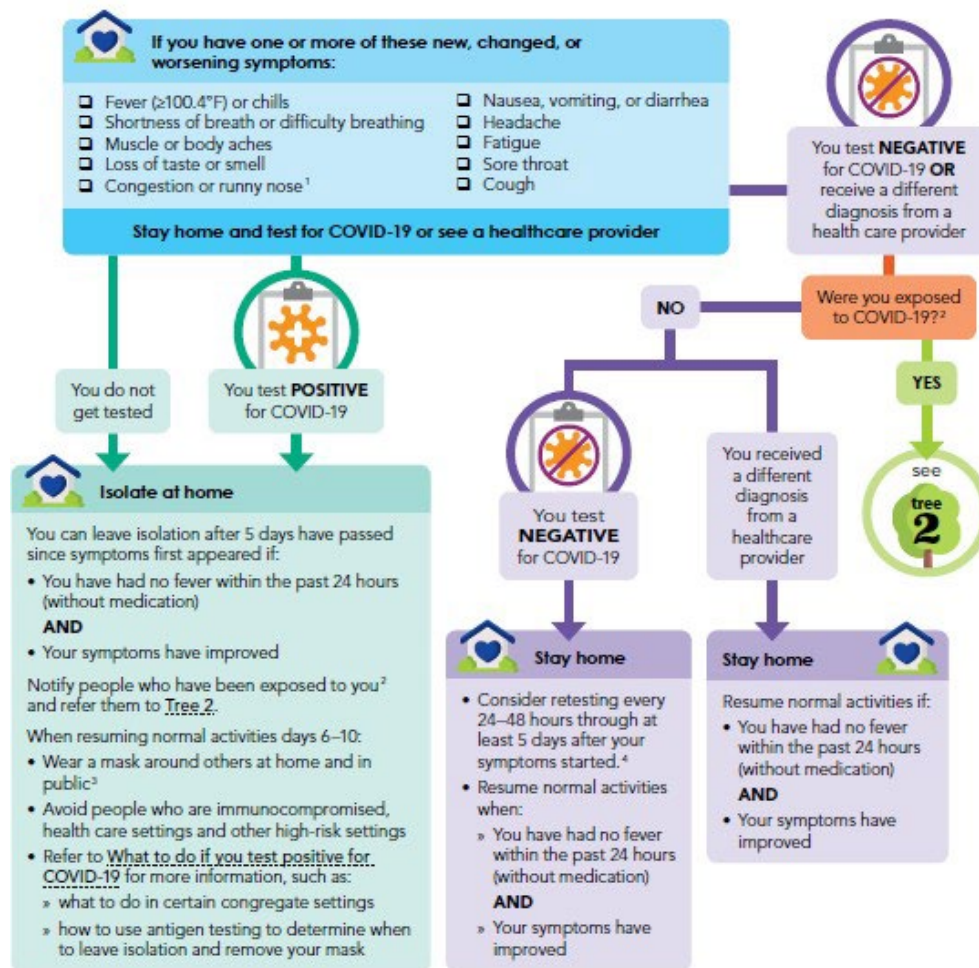
DOH Guidance: *Students, children, and staff who have symptoms of COVID-19, are **required** to stay home and should get tested and/or see a health care provider and follow the return to work/care/school protocol accordingly. Any student, child, or staff member who tests positive for COVID-19 is required to isolate at home following current guidelines from DOH and the CDC. This isolation guidance applies regardless of vaccination status.*

Launch will adhere to the DOH Guidance “What to do” flow chart

What to do if you have COVID-19 symptoms



This decision tree is for the general public and non-health care settings, such as schools and child cares.



¹ If the person is under the age of two and ONLY has this symptom, testing and isolation are not required. If the child's symptoms worsen or persist beyond 5 days, contact a health care provider.

² Exposed to COVID-19: someone who was within 6 feet of a COVID-19 case for more than 15 minutes within a 24-hour period during the case's contagious period. The definition of a close contact may vary in some situations.

³ If you cannot wear a well-fitting mask, you should complete a full 10-day isolation at home.

⁴ See [Self-Testing Guidance for the Public](#) for additional information about using repeat testing if you test negative. If you tested negative with a molecular laboratory test (e.g., PCR), you do not need to repeat testing.

2. What should a Launch staff/student do if they test positive for COVID-19?

DOH Guidance:

Isolate at home

People who test positive for COVID-19 or those who have symptoms of COVID-19 and are awaiting test results should isolate at home away from others except to get medical care. People with COVID-19 can transmit it to others. Isolating at home helps keep other people from getting sick. You should isolate regardless of your vaccination status. If a vaccinated person gets COVID-19, they can still transmit the infection to others, but being vaccinated for COVID-19 makes them much less likely to be hospitalized or die from COVID-19. Ask others to do your shopping or use a grocery delivery service. If you need food or other support while you isolate at home, Care Connect Washington is available. Call the COVID-19 Information hotline at 1-800-525-0127, then press #, or reach out to your Care Connect hub. Language assistance is available. Do not travel, go to work, school, child care, or public areas, or use public transportation, ridesharing, or taxis.

During isolation:

- Separate as much as possible from others at home, including household members and pets, by staying in a specific room away from other people and using a separate bathroom, if possible. CDC has more information about COVID-19 and Animals.
- Wear a high quality mask or respirator if you must be around others at home or in public.
- Take steps to improve ventilation at home, if possible.
- Do not share personal household items, like cups, towels, and utensils.
- Monitor your symptoms. If you have an emergency warning sign (like trouble breathing), seek emergency medical care immediately.
- If you have a routine medical appointment (as opposed to emergency care), call before you go and tell your health care provider you have COVID-19 or are being evaluated for COVID-19.

How long do I need to isolate myself and wear a mask?

If you test positive for COVID-19, stay home for at least 5 days and isolate from others in your home to avoid spreading COVID-19 to others.

Launch staff and students who test positive for COVID-19 MUST quarantine for 5 days, with Day 0 being the first day you take a Covid Test.

How long you should isolate depends on several factors:

- Whether you can wear a well-fitting mask,
- Whether you continue to test positive for COVID-19 during days 6-10 after 5 days of isolation,
- Whether you are severely ill with COVID-19 or have a weakened immune system, and
- Whether you are staying or working in a congregate setting.

If you tested positive for COVID-19 and had symptoms:

Isolate for at least 5 days after your symptoms first appeared. You can leave isolation after 5 full days if:

- Your symptoms are improving 5 days after the start of your isolation, AND
- You have not had a fever for 24 hours without use of fever reducing-medication

If you tested positive for COVID-19 but have not had any symptoms: Isolate for at least 5 days after you tested positive for COVID-19. You can leave isolation after 5 full days if you have not developed any symptoms.

Launch reserves the right to close a classroom or program to mitigate the spread of Covid-19

If you develop symptoms after testing positive, your 5-day isolation should start over. Follow the recommendations above for ending isolation if you had symptoms. Regardless of when you end isolation, take the following steps for the 10 days after you developed symptoms (or tested positive, if you never developed symptoms):

- Wear a well-fitting and high-quality mask or respirator around others at home and in public for at least 5 additional days (day 6 through day 10) after the end of your 5-day isolation period.
- Avoid people who are immunocompromised or at high risk for severe disease, and do not go to healthcare facilities (including nursing homes) and other high-risk settings.
- Do not go to places where you are unable to wear a mask, such as restaurants and some gyms, and avoid eating around others at home and at work.
- If symptoms return or worsen, you should restart your isolation period at day 0.
- See [Travel | CDC](#) for information on travel.

How to calculate your isolation period:

If you have symptoms, day 0 is your first day of symptoms. Day 1 is the first full day after your symptoms developed.

If you have not had any symptoms, day 0 is the date you were tested. Day 1 is the first full day after the specimen was collected for your positive test.

See the DOH [Isolation and Quarantine Calculator tool](#) for assistance.

Removing your mask

You may remain contagious after 5 days of isolation. Continue to wear a well-fitting and high quality mask or respirator around others at home and in public for 5 additional days (day 6 through day 10) after the end of your 5-day isolation period. Alternatively, consider using antigen testing to determine when to remove your mask (see below). If you are unable to wear a well-fitting mask, you should continue to isolate for a full 10 days.

Consistent mask use means wearing a well-fitting and high-quality mask or respirator whenever you are around others inside or outside the home. You should not engage in activities around others at times when you cannot wear a mask, such as sleeping, eating, or swimming. Mask alternatives (such as a face shield with a drape) do not provide as much protection as a well-fitting and high-quality mask. If you are not able to wear a well-fitting mask, you should isolate for 10 days.

Household Exposures

Household exposures often result in prolonged and repeated contact with positive individuals. When possible, a student, child, or staff member, who is continuously exposed at home, regardless of vaccination status, is recommended to test every 24-48 hours (about 2 days) until 5 days after the last positive household member's isolation has ended. *PLEASE notify Launch if there is an exposure in your household.*

OUTBREAK of COVID-19

An outbreak is when there are 5 or more cases or up to 20% within a class or program. Launch will report an outbreak to the proper authorities and notify families.

- All Children and Staff will be required to test for Covid 19.
- All staff and children will be required to wear a mask for at least 2 weeks after outbreak begins
- Ventilation will be used
- Any one who is sick or begins to show symptoms will be immediately isolated and sent home.

- Testing will be required every 24 hours to remain in programming
- If Launch sees more than 7 cases within 5 days this will prompt a 24 hour closure for cleaning.
- If there are more than 20% cases Launch will initiate a 72 hour closure
- If multiple staff are sick, Launch may initiate a closure.
- Launch programs located in Seattle Public Schools *may* be required to close based on the guidance from King County Public Health and Seattle Public Schools. Launch will notify families as we receive information.

3. Reporting an Outbreak

In alignment with the Council of State and Territorial Epidemiologists (CSTE) guidance for classification of school outbreaks, DOH defines an outbreak as:

- At least 5 cases within a specified core group meet criteria for a COVID-19 case from a positive test
OR
- Multiple COVID-19 cases from positive tests comprising at least 20% of students, teachers, or staff within a specified core group;
AND
- All the following three criteria are met:
 1. Initial cases have a symptom onset or positive test result within 7 days of each other.
 2. There is no evidence that transmission was more likely to have happened in another setting outside of the school or child care (e.g., household or outside social contact).
 3. Cases were epidemiologically linked in the school or child care setting or a school- or child care sanctioned extracurricular activity

An outbreak is considered over after 14-days have passed without any new cases.

1 A “core group” includes but is not limited to an extracurricular activity, cohort group, classroom, before/after school care, etc.

2 All groups of 5 cases or 20% within a specified core group that meet criteria 1 and 2 will be presumed to be epidemiologically linked and must be reported to the LHJ as a suspected outbreak. The LHJ will make the final determination for classifying an outbreak.

If a school or child care provider is unsure if an event is an outbreak, they should contact their local health jurisdiction.

3 A school- or child care-sanctioned extracurricular activity is defined as a voluntary activity sponsored by the school, local education agency (LEA), organization sanctioned by the LEA, or child care. Extracurricular activities include, but are not limited to, preparation for and involvement in public performances, contests, athletic competitions, demonstrations, displays, and club activities.

Appendix A

Launch @ _____ Visitor/Vendor Sign In Sheet 

Date	Printed Name	Signature	Visitor or Vendor

8.11.2023 jh

Appendix B

Launch COVID-19 Closure Matrix

COVID-19 Exposure Scenario Protocols

Families will be notified in the event of any positive COVID-19 cases within the center.

IF...	THEN...
1-2 staff member/student tests positive for COVID-19 within 7 days	Launch will: <ul style="list-style-type: none"> - Clean and sanitize program space(s) - Encourage families at that site to complete a COVID-19 test - Remain OPEN
4 staff members/student(s) in the same building test positive for COVID-19 within 7 days	Launch will: <ul style="list-style-type: none"> - Clean and sanitize program space(s) - Rapid Antigen tests available to staff and families - Monitor for symptoms - Remain OPEN - All Staff and Students will wear masks during the 10-day symptom watch
Full Outbreak of COVID-19 of approximately 20% (vaccinated or unvaccinated) or more cases within 7 days	Launch will: <ul style="list-style-type: none"> - Clean and sanitize program space(s) - CLOSE for 24-72 hours from the LAST day a COVID-19 positive staff member/student was present¹ - All staff & students must receive a NEGATIVE COVID-19 test prior to return and will be asked to continue testing daily - Rapid Antigen tests available to staff and families <p style="text-align: center;">All Staff and Students will wear masks during the 10-day symptom watch</p>

Our ability to reopen on this timeline will be based on level of staffing available.

Launch reserves the right to close a classroom or program to mitigate the spread of Covid-19

