



Launch Summer 2022 Health & Safety

Dear Summer 2022 Launch Families—

We thank you for your patience as we continue to adapt to the changing landscape of COVID-19 and new requirements from the Department of Children Youth and Families, King County Department of Health, and Seattle Public Schools.

As a reminder, per Governor Inslee's guidance, ALL people, including staff, volunteers, and families, must be vaccinated (or have a verified exemption) to enter Launch's program spaces while children are present. Beginning October 18th, all Launch employees and any volunteer or parent who wish to enter the program space will be asked about their vaccination status prior to entering any Launch programs.

Please read through the below guidance carefully, as many components have changed.

COVID-19 Prevention Best Practices

MASKS

- All Launch staff on-site with children will continue to wear masks both indoors and outdoors.
- All preschool students will continue to wear masks both indoors and outdoors, regardless of vaccination status.
- School-age students will continue to wear masks indoors while in Launch's programs. They will be allowed to remove their masks when outdoors

Masks will be required for participants in certain circumstances related to attending program after isolation or exposure to COVID-19, or due to health concerns in a specific classroom.

PHYSICAL DISTANCING

We will continue to minimize close contact whenever possible. We will maintain a physical distance of three feet or more between students in classroom settings to the degree it is possible and reasonable, which allows for full-time, in-person learning for all students. A school's ability to do so will depend on students' ages, developmental and physical abilities, and available space.

HANDWASHING

We will continue frequent handwashing — with teacher support — throughout the day.

CLEANING & DISINFECTING

Classroom spaces and high touch surfaces will be frequently disinfected throughout the day.

CHECK-IN/CHECK-OUT

Launch families will begin checking their own students in/out utilizing the Procure system, with either their fingerprint or a self-selected code. Kiosks will be accessible to families, and regularly sanitized throughout the day.

MEALS

Meals and snacks will NOT be offered in family style.

Illness Policy

Launch staff will continue to complete a health screening for all staff upon arrival at the program. Launch students will be monitored for symptoms of COVID or other illnesses throughout the day. Students who begin to exhibit any symptoms of illness will be sent home immediately. **(Appendix B)**

Launch reminds all families that their children should not attend school while exhibiting any symptoms of illness should be kept home from school and only return when symptoms are no longer present.

Tuition Policy

Per Launch Policy, there are no credits or refunds for any short-term closures relating to COVID-19 or any



Launch Summer 2022 Health & Safety

days missed while a student is in quarantine. In the event of a classroom, school, or district-wide closure, Launch leadership will meet to evaluate appropriate next steps. The decision to reopen classrooms, open a Full Day program, or to continue an After School program during such a closure would be based on community safety, space availability, and staffing ability.

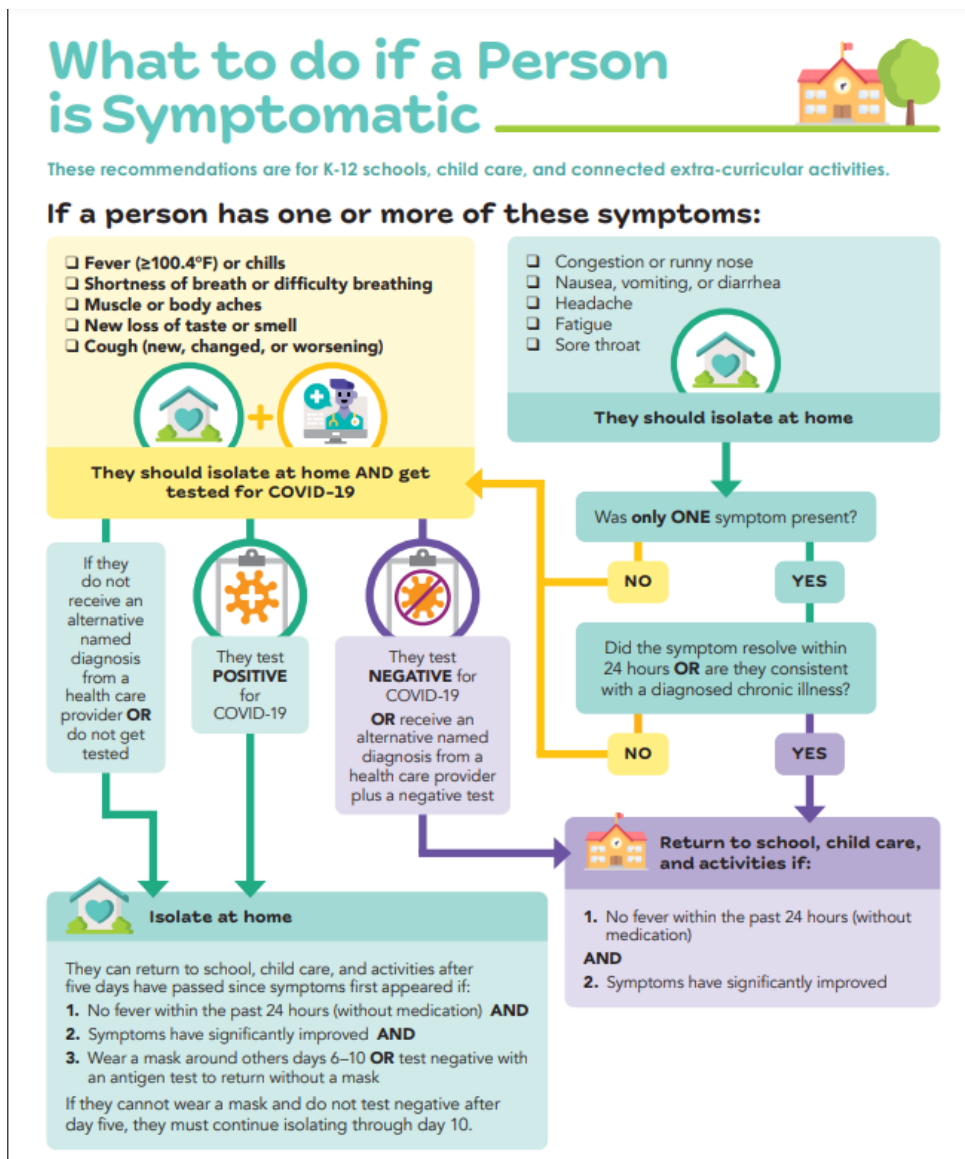
Launch reserves the right to modify/adjust our COVID-19 Response Protocol and Closing Matrix at any time.

Health & Safety Guidance

1. What should Launch staff or students do if they begin to demonstrate symptoms of COVID-19?

DOH Guidance: *Students, children, and staff who have symptoms of COVID-19, are **required** to stay home and should get tested and/or see a health care provider and follow the return to work/care/school protocol accordingly. Any student, child, or staff member who tests positive for COVID-19 is required to isolate at home following current guidelines from DOH and the CDC. This isolation guidance applies regardless of vaccination status.*

Launch will adhere to the DOH Guidance “What To Do...Symptom Flowchart” (**Appendix A**)





2. What should a Launch staff/student do if they test positive for COVID-19?

DOH Guidance: *Any student, child, or staff member who tests positive for COVID-19 is required to isolate at home following current guidelines from DOH and the CDC. This isolation guidance applies regardless of vaccination status.*

Launch staff and students who test positive for COVID-19 MUST quarantine for 5 days, with Day 0 being the first day of symptom on-set OR positive test if asymptomatic. The individual may return to school/care after 5 full days of isolation if:

- Their symptoms have improved or they are asymptomatic, **AND**
- They are without a fever for the previous 24 hours without use of fever-reducing medications.

AND IF returning to school/care days 6-10, the individual is required to:

- Wear a well-fitted mask or during days 6-10 of their isolation period, consistent with CDC guidance, **OR**
- Test negative with an antigen or at-home test any day after day 5 before returning without a mask. Testing beyond day 10 is not necessary.

If the individual is not able to wear a well-fitted mask, AND does not test negative, they are required to continue isolating through the end of their isolation period.

3. What about staff/students who are considered close contacts of someone who tested positive (including siblings/family members)

Generally, a close contact is someone who was within six feet of a person with COVID-19 for at least 15 cumulative minutes over a 24-hour period during the period of time when the person with COVID-19 was infectious. The infectious period of someone with COVID-19 starts two days before the onset of symptoms, or is estimated as two days before the positive test collection date if someone with COVID-19 is asymptomatic

In a Preschool-Grade 12 indoor classroom, the close contact definition excludes students who were at least three feet away from an infected student when (a) both students were wearing face coverings/masks and (b) other prevention strategies were in place.

People who are exempt from quarantine:

- Close contacts who are fully vaccinated and do not have symptoms do not need to quarantine, but should be tested 3-5 days following a known exposure to someone with suspected or confirmed COVID-19, and wear a mask in all public indoor spaces for 10 days or until they receive a negative test result. They should isolate and follow appropriate guidance if they test positive. If they develop symptoms consistent with COVID-19, they should isolate themselves from others, be clinically evaluated for COVID-19, and tested for SARS-CoV-2 if indicated. The symptomatic fully vaccinated person should inform their healthcare provider of their vaccination status at the time of presentation to care.
- Close contact who had confirmed COVID-19 in the past three months, have recovered and do not have symptoms, do not need to quarantine but should watch for symptoms and get tested if symptoms develop.

Sick staff members or parents/guardians of sick students should notify Launch immediately if they or someone in their home tests positive for COVID-19.



Quarantine/Isolation for Unvaccinated Students

Launch will continue to require an isolation/quarantine period for unvaccinated students who have been exposed to COVID-19, defined as “close contact”.

Unvaccinated close contacts will quarantine for 5 days, with Day 0 as the last known day of exposure. They can return on day 6 if they have:

- No symptoms **AND**,
- Negative antigen or PCR test given between days 3-5 of the quarantine **AND**,
- Wear a well-fitting mask for days 6-10

4. What will prompt a Launch-initiated closure? (Appendix C)

All cases of COVID-19 and outbreaks in schools and child care facilities must be reported to the local health jurisdiction as per Washington State law ([WAC 246-101](#)). In addition, schools, child care facilities, and the general public must cooperate with public health authorities in the investigation of cases and outbreaks that may be associated with the school or child care center ([WAC 246-101](#)). A COVID-19 outbreak in a school or child care center is considered when the following have been met:

- There are five or more COVID-19 cases among students or staff.
- The cases have a symptom onset or positive test result within a 10-day period of each other.
- The cases are epidemiologically linked.
- The cases do not share a household.
- The cases are not identified as close contacts of each other in another setting during the investigation.

Launch programs located in Seattle Public Schools *may* be required to close based on the guidance from King County Public Health and Seattle Public Schools. Launch will notify families as we received information.

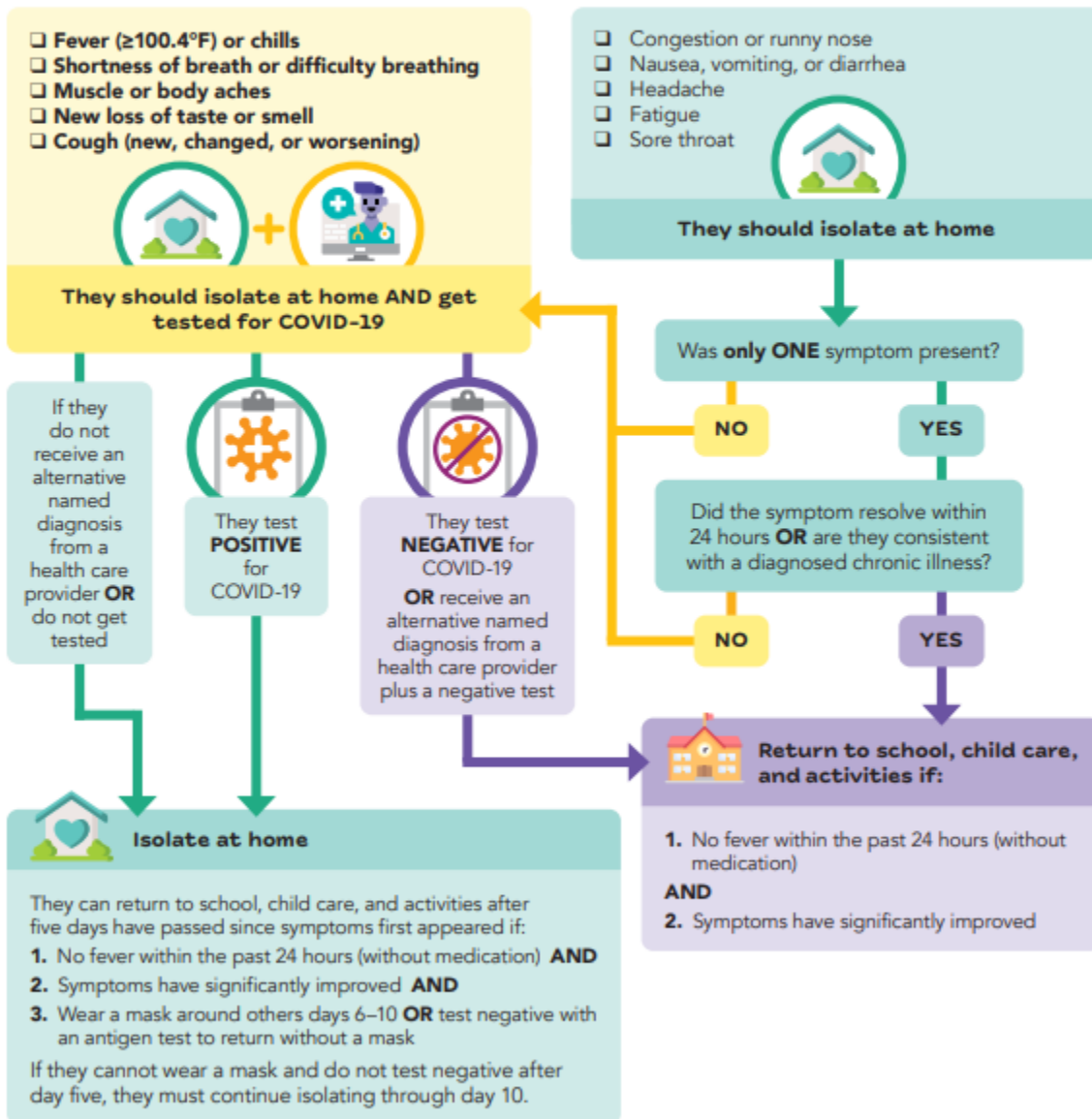
Appendix A

What to do if a Person is Symptomatic



These recommendations are for K-12 schools, child care, and connected extra-curricular activities.

If a person has one or more of these symptoms:



Appendix B

Launch 2021-2022 COVID-19 Staff and Visitor Screening Tool

This tool is intended to screen Launch employees for conditions that would prevent them from working at a Launch site under COVID-19 protocols. It should be completed by every employee each day when reporting to a Launch work site until further notice.

All Launch visitors must also complete this form.

Please sign the form at the start of every day you are at a Launch location. Staff will be asked to take their temperature prior to entering the Launch location. This form will be used to notify any potential exposures and MUST be filled out by all adults entering the program.

Location:		Date:			
Name Y/N for each question	Do you have any of these symptoms that are not caused by another condition? • Fever or chills • Cough • Shortness of breath or difficulty breathing • Fatigue • Muscle or body aches • Headache • Recent loss of taste or smell • Sore throat • Congestion • Nausea or vomiting • Diarrhea	If you are <u>not</u> fully vaccinated, have you been in close contact with anyone with COVID-19 in the past 10 days? Close contact is being within 6 feet for 15 minutes or more over a 24-hour period with a person; or having direct contact with fluids from a person with COVID-19 with or without wearing a mask (i.e., being coughed or sneezed on).	Have you had a positive COVID-19 test for active virus in the past 10 days, or are you awaiting results of a COVID-19 test?	Within the past 10 days, has a public health or medical professional told you to self-monitor, self-isolate, or self-quarantine because of concerns about COVID-19 infection?	Temp check?

|



Appendix C

Launch COVID-19 Closure Matrix

COVID-19 Exposure Scenario Protocols

Families will be notified in the event of any positive COVID-19 cases within the center.

IF...	THEN...
<p>1-2 staff member/student tests positive for COVID-19 within 7 days</p>	<p>Launch will:</p> <ul style="list-style-type: none"> - Clean and sanitize program space(s) - Encourage families at that site to complete a COVID-19 test - Remain OPEN
<p>Three staff members/student(s) in the same building test positive for COVID-19 within 7 days</p>	<p>Launch will:</p> <ul style="list-style-type: none"> - Clean and sanitize program space(s) - All staff & students must receive a NEGATIVE COVID-19 test prior to return - Rapid Antigen tests available to staff and families - Monitor for symptoms - Remain OPEN - Unvaccinated close contacts will follow the Isolation/Quarantine Protocol
<p>Full Outbreak of COVID-19 of approximately 5 (vaccinated or unvaccinated) or more cases within 7 days</p>	<p>Launch will:</p> <ul style="list-style-type: none"> - Clean and sanitize program space(s) - CLOSE for 5 days from the LAST day a COVID-19 positive staff member/student was present - All staff & students must receive a NEGATIVE COVID-19 test prior to return - Rapid Antigen tests available to staff and families