



launch
Learn. Grow. Inspire.



2016-2017

Annual Report

Our Mission:

Lead the charge to brilliant outcomes for the children of our community by ensuring equitable access to the highest quality learning and care.

Welcome

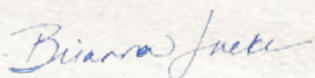
In 2017 we celebrated our 40th anniversary. How far we've come from our days operating out of a garage! We've grown from offering an after school program at a single site to 10 locations with a range of programs including preschool, before & after school and summer camps.

Over the years more than 20,000 children and their families have come through our doors. This milestone wouldn't have been possible without the incredible commitment of our donors, staff, partners, community and friends to improving access to high quality programming for children. Thank you!

We're heartened by the progress we've made over the last year. 300 preschoolers and 917 elementary students learned new skills, made friends, and were encouraged and nurtured by our teachers. And with the support of our donors and funders, we provided over \$330,000 in uncompensated tuition and tuition assistance to lower-income families.

Despite these gains, there's still work that needs to be done. There are children in our community who don't have access to effective learning programs, and this number is only growing as Seattle becomes increasingly unaffordable. But we're committed to ensuring that all children can attend a quality program, and we know that together we can achieve this goal.

Thank you to everyone who has lifted Launch up and helped us to continue our work.



Brianna Jackson
Executive Director



Program Highlights

Preschool

Our preschool students had a busy year of learning and growth! We read countless books, played with dolls and blocks, created art, played outside, and much more. Our play-based program helped children learn pre-academic skills needed for kindergarten, plus they also developed social-emotional skills such as recognizing feelings and learning how to calm themselves.

We opened a new preschool in October 2016 at Rainier Community Center, bringing our total number of classrooms to 6. Unfortunately, in May 2017 we were notified that Seattle Public Schools would reclaim our Leschi preschool classroom for K-5 instruction. We'll offset this loss by opening 4 new preschool classrooms in 2018.

During 2016-2017 we expanded some of our preschool partnerships. Zeno offered family engagement events where they taught our families fun math games and provided training to our teachers. The Seattle Art Museum provided teacher professional development on how to incorporate the arts into our classrooms. And they also hosted a fun Launch family event at the museum!

Before & After School

This year Seattle Public Schools shifted elementary school start and end times earlier, plus every Wednesday was an early

release day. Because of this, children spent even more time at Launch, which gave us the chance to really engage them. During 2016-2017 students wrote a play, made art, cooked healthy food, created their own board games, learned hip hop dance, did science experiments, and so much more!

We also joined a pilot project to develop a quality improvement and rating system for youth expanded learning opportunities, similar to the Early Achievers system for preschool programs. The pilot program is a partnership between School's Out Washington, OSPI, and WA Dept. of Early Learning and provides quality assessments and training/coaching for teachers. The goal is to create quality standards for youth programs and help teachers develop the skills, knowledge and tools necessary to better engage and interact with youth.

Summer Camp

Our programs have the same intentionality during the summer as they do during the school year and help children avoid summer learning loss while having fun. We explored the city through weekly field trips, including to the Zoo, Aquarium, the beach, and the Seattle Center. We had guests visit our programs to do fun projects with our students. And we played outdoors, created messy art, made new friends, and did hands-on learning activities on topics

like science, history, sustainability, music, and health. Our campers had fun while maintaining or strengthening their social-emotional and academic skills.

Leap Ahead

Leap Ahead is our summer program to help preschoolers transition into kindergarten. Activities look similar to our school-age camps - we play outside, take field trips, make art, etc. We also collaborate with kindergarten teachers, take school classroom tours, and help children adjust to the expectations of elementary school.

We offered need-based scholarships to 54 children thanks to a grant from the City of Seattle's Families & Education Levy. The scholarships supported children who hadn't attended preschool, or attended but needed more support to be kindergarten-ready.

Alex's Story

2nd grader Alex came to Launch after getting kicked out of his previous elementary schools and after school programs. His behavior was challenging - he'd try to run away, and when he got angry or frustrated he'd hit students or teachers. Launch teachers gave him structure and positive reinforcement. They encouraged him, helped him develop self-worth and taught him to control his outbursts. Now Alex's behavior is much better, he shares his feelings, calms himself, and he even made friends. And at pick-up time he asks to stay longer!

Making A Difference:

- 79% of our children finished preschool ready to enter kindergarten, compared to just 67% of entering kindergartners in Seattle Public Schools who demonstrated kindergarten-ready skills.
- 92% of our school-age children demonstrated "Typical" or "Strong" social-emotional skills.
- Children in Leap Ahead increased their kindergarten-ready skills from the start of summer to the end of summer.

Making Progress Towards Equity & Access

Launch serves children and families from all backgrounds and walks of life. We work hard to create an inclusive space where everyone is welcome, no matter what. Given the current political climate, our commitment to equity and access has never been more important.

Expanding Access

A core part of our mission is to expand access to those who typically don't have access to programs like ours. That's why we place our programs in high-need neighborhoods, accept childcare subsidies from the City of Seattle and DSHS, and provide need-based Launch scholarships. In 2016-2017 we provided over \$330,000 in uncompensated tuition and tuition assistance to lower-income families.

Supporting Children & Families

While part of our mission is to expand access, we intentionally serve children from all walks of life. All children, regardless of their background or family's income, have their own challenges to overcome and they deserve to attend a quality program.

Some of our children face issues like poverty, homelessness or hunger. And others may seem outwardly privileged, yet are struggling with the impact of their parents' divorce or a learning disorder. No matter what their challenge, Launch works to support them and help them on their

individual paths to success.

We help families apply for childcare subsidies, refer them to resources like housing, medical care, and food, and help them access services like special education. And we also provide family education; in 2016-2017 we offered classes on how to teach preschoolers pre-math skills through fun games. And we hosted monthly community kitchen events where families learned to cook healthy and delicious meals.

Cultural-Competency

We serve an incredible diverse group of children and take special care to offer culturally-competent, inclusive programs. Our educational materials and environment reflect the diversity of children's families. We incorporate each child's customs, language, background, foods, holidays, and family structure into the program. We provide children opportunities to participate in culturally-relevant activities and train staff annually on culturally sensitive/anti-bias approaches to interacting with children and families in the program.

One of the other ways we ensure cultural-competency is by hiring and retaining staff who reflect the diversity of the communities we serve. In 2016-2017, 52% of our staff identified as people of color. 20 languages are spoken by our teachers, who translate for our families as needed.

Launch Families

Have their Say

“ I like the welcoming environment and how **Launch embraces diversity and inclusion.** ”

LAUNCH PARENT

“ I can't express how grateful I was to be able to enroll him in this program and to get a scholarship. I ”

wish all kids got the chance to do this as it makes such a difference as they are entering school to feel accepted, safe and excited about learning.

LAUNCH PARENT

The range of experiences, culture and ways of thinking that my

kids are exposed to is extremely valuable to me. ”

LAUNCH PARENT

Launch is committed to providing equitable access to our programs. In 2016-2017:

- 38% of our families had a household income below 80% of the median income for our area.
- 56% of our children identified as children of color or multi-racial.
- 25% of our children spoke a language other than English at home.
- 35 languages were spoken by Launch families.



1977



1980



1991



2017

A Look Back: 40 Years of Launch

In 1977 a grassroots group of families founded Launch (then called Community Day School Association) because their children needed a safe place to go after school. 40 years later, we've served over 20,000 children and have grown to include preschool, before & after school and summer camps at 10 locations. Thank you for being a part of this journey and for believing, as we do, that all children deserve to attend a quality learning program.



1997



2011



2001



2000



“Unquestionable capability,
trustworthy, transparent, compassionate,
and all local teachers who understand
the dynamics of our community because
they are a part of the community.”

LAUNCH PARENT

Investing in Our Staff Through Training

A significant part of our work is to train new teachers. Underserved communities are most affected by inexperienced or unprepared teachers, and by helping increase the number of high quality teachers who reflect the communities we serve, we're addressing some of the inequities that contribute to the achievement gap.

Professional Development

This year we provided **over 5,000 hours** of staff professional development and training. One of the professional development highlights this year was our all-staff, full-day training before the start of summer camp. Our most experienced teachers shared tips and techniques with the rest of our teachers, including examples of fun learning activities they could do with their campers.

Our teachers also benefited from partnerships with Zeno and the Seattle Art Museum. Zeno did trainings on how to teach preschoolers early math skills, and the Seattle Art Museum taught our teachers how to incorporate the arts into the classroom.

In recent years we've seen an increase in the number of children who've experienced trauma or have behavior challenges. In response, this year we provided additional training to our teachers around how to support these children. We worked with a consultant in a year-long process to strengthen our practices around Multi-Tiered Systems of Support, trauma-informed teaching, and supporting children with adverse childhood experiences. The consultant provided training to staff as well as in-classroom coaching for teachers.

Supporting Teacher Education

Initiatives like the Seattle Preschool Program

are working to professionalize the fields of early learning and youth development. One of the ways that they're doing this is by increasing teacher educational requirements. Preschool teachers are now required to have a Bachelor's Degree in Early Childhood Education, and existing teachers have 4 years to finish their degree. Many of our teachers have lots of experience but may not have completed their degrees, so Launch worked to help them finish.

Thanks to a partnership between North Seattle College, the Seattle Preschool Program, and preschool providers like Launch, our preschool teachers were able to go back to school and complete a Bachelor of Applied Sciences in Early Childhood Education while working full-time at Launch. Our teachers even can complete their required projects and practicums in Launch classrooms. The first Launch teachers graduated in June 2017, and more will graduate in the next year!

Quality Initiatives

We participate in a number of program quality initiatives including the Youth Program Quality Initiative and Early Achievers. This year we joined a new program quality initiative as part of a pilot project. This initiative is a partnership between School's Out Washington, the Department of Early Learning, and the Office of Superintendent of Public Instruction, and is working to create an out-of-school-time quality rating and improvement system similar to the Early Achievers. The initiative is providing training, coaching, and assessments using national research on promoting best outcomes. Not only is this process improving the quality of our school age programs, but we're also helping create rigorous quality standards for other youth programs.

Meet Zaya

A Launch Kid

PROGRAM
After School

FAVORITE SUBJECT
Science

FAVORITE THING
ABOUT LAUNCH
It makes me feel
at home



“ We couldn't find a better program. The kids

love going there - they never want to leave. Teachers are great problem-solvers, they listen and give great advice, communicate well, interact with the kids, and I love the homework help they give. We love our Launch family!

ZAYA'S GRANDMOTHER

2016-2017 Financials

Revenue

Fee for Service - Other	\$2,542,882
Fee for Service - Seattle Preschool Program	\$1,377,222
Fee for Service - City of Seattle Other	\$328,944
Fee for Service - DSHS	\$613,027
Grants & Contracts	\$314,902
In-Kind Contributions	\$251,984
United Way	\$88,750
Contributions*	\$38,133
Other	\$4,553

*Contributions include fundraising event revenue net of expenses.

Total Revenue \$5,560,397

Expenses

Programs	\$4,197,744
Administration	\$628,843
Fundraising	\$103,314

Total Expenses \$4,929,901

Note on Financials

Launch had a larger than expected surplus for FY2016-2017. This is largely due to a decrease in staffing costs due to open positions. Funds will be used to cover expenses for program expansion, start-up costs for new locations, and provide additional tuition assistance to lower-income families.

Uncompensated Care & Tuition Assistance

During 2016-2017, we provided more than \$330,000 in uncompensated care and tuition assistance to lower-income families. Our contractual reimbursement rates from DSHS are well below the cost to provide our services and we are not

allowed by DSHS to bill families for the difference. For this reason, many education providers place a cap on the number of low-income and subsidized students they will accept. Launch does not place any limits on the number of subsidized students we serve. We also offer Launch scholarships for children with a financial need.

Your support made
big things happen

2016-17

300
preschoolers

participated in our early learning programs

917 students

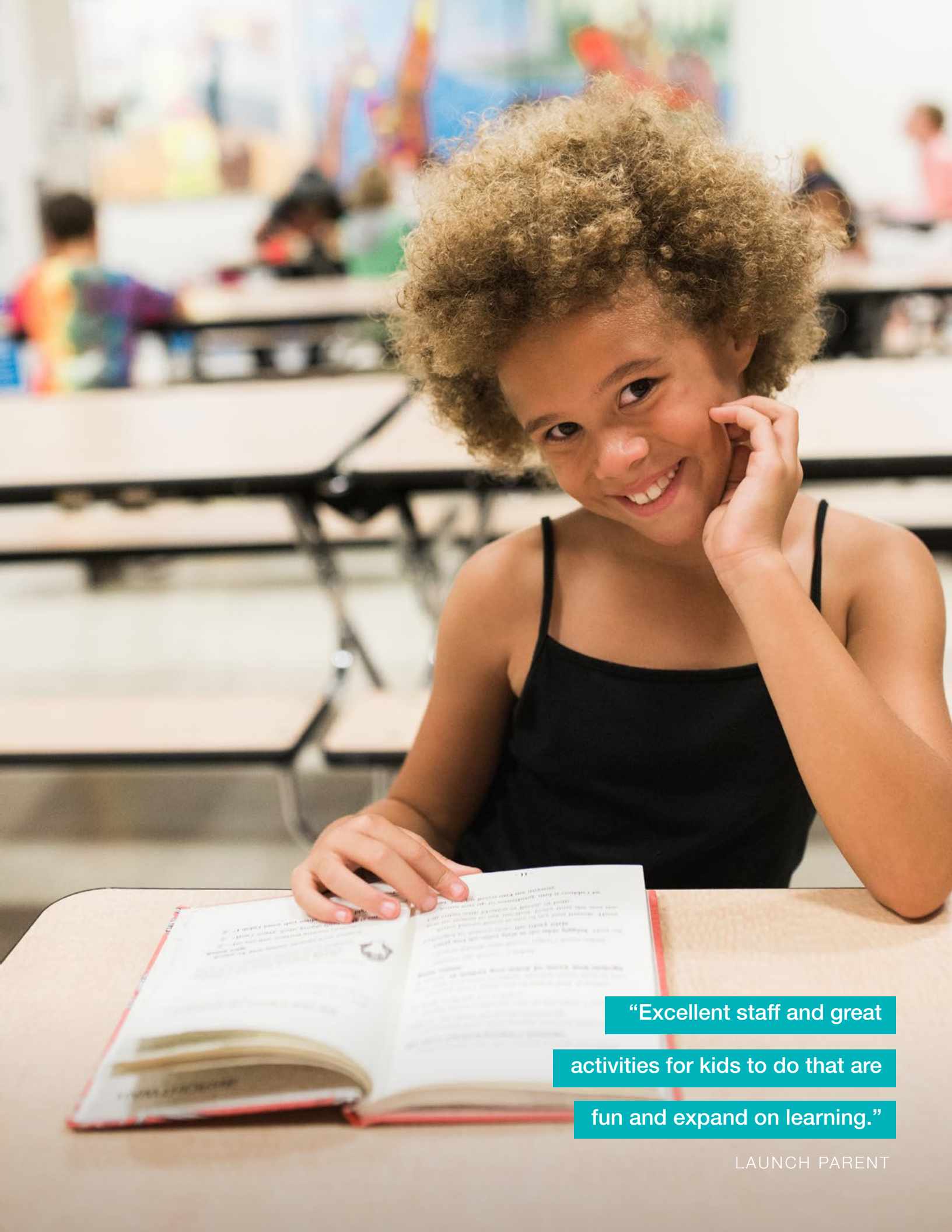
participated in our school-age programs

We provided more than
\$330,000
in uncompensated tuition and tuition assistance

We served
110,000
meals

We provided over
480,000
hours of programming

Our staff attended over
5,000
hours of professional development & training



“Excellent staff and great
activities for kids to do that are
fun and expand on learning.”

LAUNCH PARENT



Community

Support

270

INDIVIDUAL DONORS

19

FOUNDATIONS &
CORPORATIONS

31

IN-KIND DONORS

24

VOLUNTEERS

Why I Support

Launch

“Launch is a treasure in the community,

providing a caring, positive learning environment for young children at a very impactful time of their lives.

JEFF COOK, LAUNCH DONOR

Thank You to Our Donors & Funders

Saudia Abdullah • Jennifer Addis • Matt Adkins • Alive & Well • Theresa Alfonso-Mendez • AmazonSmile • Emmy Anderson • Jess Andre • Anonymous • Melanie & Casey Arena • June Ashley • Baguette Box • Kris Baldassin • Linda Barber • Battelle • Jessica Hunnicutt Batten • David Beckerman • Seok Bee Lim • Sherrie Belt • Richard Berganio & Jackie Jamero Berganio • Stephan & Janet Blanford • Blick Art Materials • Perry Bloch • Michael Blumson • Boeing • Brad & Lauren Padden • Eric Bratton • Brad Brigham • Bright Funds Foundation • Dorothy & Larry Brooks • Doug & Taylor Brownlow • Gregory Bryan • Nathaniel Buck & Lindsay Halm • Rob Bush • Steve G Caldwell • Dan & Nancy Campi • Rhonda Cavanaugh • Elise Chayet • Marty & Stacy Chilberg • Tyler Chin • Thomas Christensen & Glen Feliast-Cristensen • Danya Clevenger • Jessica Coffman • Jolenta Coleman • Sharon & Gary Constantine • Jeffrey Cook • Kevin Cook • Tiffany Crosby • Courtney Daikos • Barbara & Ted Daniels • Fran Davidson • Janice Deguchi • David Detlefs • Jake Director • Liz & Dave Director • Discount School Supply • Tony Dodson & Chris Haven • Christopher Doll • Elizabeth Dolliver & Philip Thompson • Steven Doman • Benjamin & Lesley Duncan • Tom Dunford • Patrick Dusuntia • Consuelo Echeverria • Don & Susann Edmond • Patricia Edmond-Quinn & Henderson Quinn • Scott Edwards • David Ellenhorn • Heather Elsa • Shari Elsoe • Jessica Emerson & Evan Buehler • Melissa Englund & Cory Funk • Scott Erickson • Ezells • Chris Feise • Allen Fong & Hiromi Yasukawa • Sally Fox • Ade Franklin • Ketil Freeman & Susannah Herrmann • Fun Assembly Required • Summer & Hugh Gallagher • Laurie & Gabe Ganberg • Art Garcia & Carole Kassir-Garcia • GE Foundation • Tony Gee • Lisa Gillin • Sarah Gist • Ken & Sandy Glass • Jonathan & Sara Glick • Jay Goldstein • Owen Gonder • Google • Barry Goren • Kristopher Green • Shari & Shawn Griffin • Kathleen Groshong • Muguetie Guenneguez • Suna Gurol & James Jeffreys • Dori Gustafson • Brianna Gutierrez & Michael Thorne •

Meghan Halabisky • Sarah Hamilton • Julie Hancock • Linda Harris • Kirsten & Jason Harris-Talley • Sara Hasan • Summer Hayes • Angela Heald • Constance Hellyer • Bethany Henderson • Kim Herber • Erica Hesse • Becky Hester Nick Heyer • Irl Hirsch • Margaret Hoang • Mary Hoang & Arthur Schile • James Hong • William Hooper • Jared Hopkins • Hot Mama's Pizza • Kristin Houser • Megan Hurley • Inn at the Market • Soojean & Jason Ishiguro • Grace Isner • Brianna Jackson • Jackie Jainga Hyllseth • Caryn Swan Jamero & Peter Jamero • Jennifer Jansons • Mark & Tiffany Jessup • Colleen Johnson • Dave & Alyson Johnson • Kelby Johnson • Stephanie Jones • Jennifer Joseph & Perry Parsons • Mary Joyce • Kaladia Coffee • Margot & Travis Keany • Susan Kelleher • Laurie Kelly • Thomas Kiehne • King County Employee Giving Program • Daniel Kingsbury • Tiffany Knapp • Sally Knodell • Cris Krisologo • Rebecca Kuenzel • Kyl Dinsio & Jason Trump • Debra & Lars Landrie • Rehana Lanewala • Ethylanne Larrimore • Jaime Larson • Jenn Lee • Ryan Lee • LeFrock Consignment • Larry Lewis • Rodney & Patricia Lewis • Susie G. Lewis • Tim Lewis • Monica Liang-Aguirre • Brian & Jennifer Lloyd • Delphi Locey • Suet & Ralph Lock • Mark Long • Karina Luboff • Jeff Maggiori & Josh Rohr • Manmoon Restaurant • Paola Maranan • Julie & Craig Marl • Komala Martin • Massive Monkees • Scott McAdams • Molly McCollister • Megan McJennett • McMenamins Six Arms • Amir & Debbie Medawar • Gary Melonson • Michael & Summer Popelka • Microsoft • April Miller • Sarah Miller • The Mockingbird Fund • Marzette & Mandla Mondin • Anne Moore • Emily Morgan • John Morrison & Christina Wong • Andre Mueller • Teresa Mulholland • Erica Mullen • Forrest Murphy • Mary Murray • Rene Murry • Sharene Nelson & Michael Giambalvo • Anjanette Nelson-Wally & Jody Wally • Brian Neville • Kelsey Noonan • Angela Nucci • Niall O'Donoghue • Mari Offenbecher • Erin Okuno • Steve O'Neill • Maggie O'Rourke • Glen Osborn • Outerwall • Michael Owens • Margaret Papsdorf •

Amie Patao & Chris Bailey • Carol Peoples Proctor • Maria & Shaji Philip • Louise Pitell • Bethany Plett & William Piggot • Sandra & Leo Poort • Tony Prieto • CiKeithia Pugh • Kathryn Pursch Cornforth • QFC • Adam Rakunas • Daryl Randle • Raven Salon • Sheila Remes • Ristorante Machiavelli • Jennifer Robbins & Thane Somerville • Anthony & Kimberly Robinson • Michael Rogers • Sky Rogers • Mark Rosenkranz • Maranda Rosenthal • Jessica Ross • Patrick Rossol-Allison • Mark Flores Salanga • Jean Sanders • David Sandoval • Sala Sataraka • Karma Sawka • Doris & Robert Schaefer • Ken Schlegel & Gabriel Bumgarner • School's Out Washington • The Schubiger Fund • Amanda Schwanz & Stephen Baker • Allison Schwartz • The Seattle Foundation • Seattle Storm • Seattle Tattoo Emporium • Seattle Theatre Group • Melissa Shapiro • Dave & Sara Sharkey • William & Patricia Shaver • Mike Shepherd • Rochelle Short • Bonnie Showers • Lisa Sidlauskas • Aileah Slepski • Peter Smith & Ryan Leu • Standard Goods • Social Venture Partners • Oleg Solovey • Paul Sommer & Laura Selby • Meghan Squires • Sarah Stachowiak & Tyler Hill • Christine Stark • Jeffrey Stegelman • Helena & Alec Stephens • Sterling Realty Organization • Rachael Steward • Rebecca Stob • Stüssy • Ed Swan II & Linda Barnes • Ed & Shirley Swan • Tango Restaurant • Tolulope Taiwo • Tivolata Restaurant • Gayle Teramura & Roger Terriere • Terra Plata • Tilth Alliance • Angie Tonnon • Janis Traven • Truelove Art Gallery • Manuel Uson • Angie & Trey Valenta • Catherine Verrenti • Daley Vertiz • Sabrina Villanueva • Abby Vincent & Jon Sayer • Anthony Ward • Deborah Ward • Erin Weible • Tama Weinberg • Carol Weisbecker • Miles Welch • Liddy Wendell • Jessica Werner • Cheryl West • The Westin Seattle • Megan Whalen • Heather Wilde • Maegan & Patton Wilkinson • Rhonda Withrow • Anita Woo • Carol Wood • Kevin Wright • Kimberly Wright • Shubo Wu • Terrie Yaffe • Susan Yang • Lori Yonemitsu & Vernon Jay • Hilary Young • Mariana Zantop • Zero Zero Hair Salon • Catherine Zulkosky



2016-2017
Annual Report



Return service requested

launchlearning.org
Seattle, WA 98108
5950 6th Avenue S, Suite 109



NON-PROFIT ORG.
U.S. POSTAGE
PAID
SEATTLE, WA
PERMIT NO. 1949